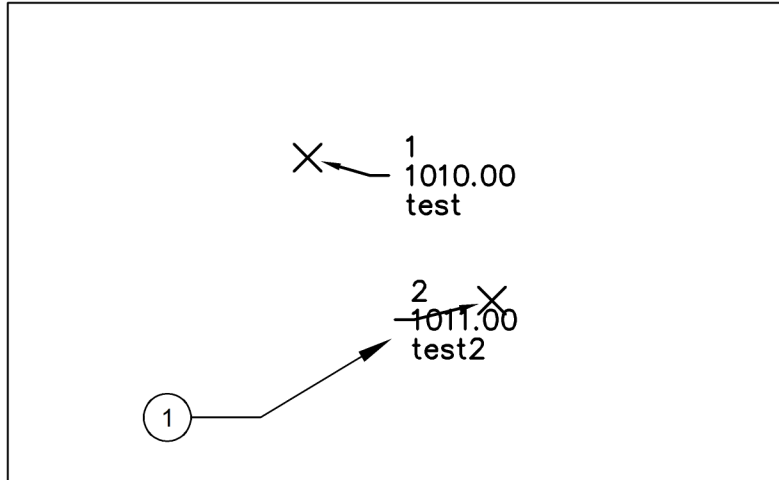
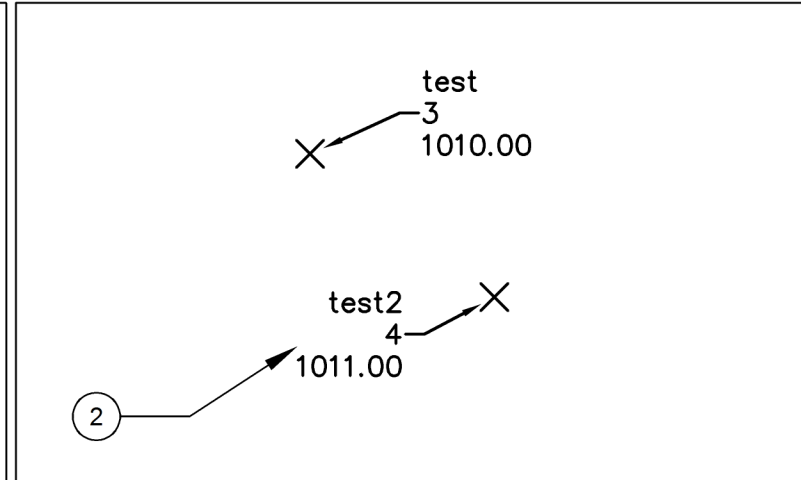


Point Label Style Tip

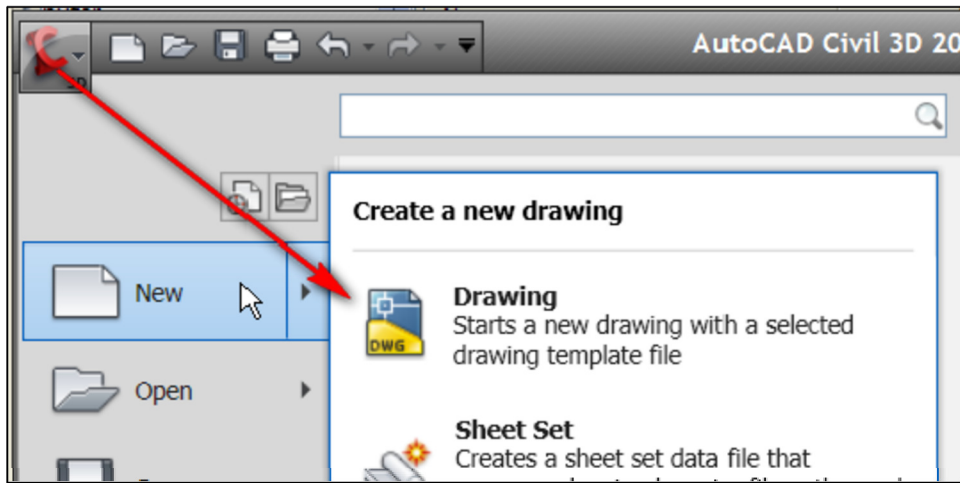
by Brian Morse



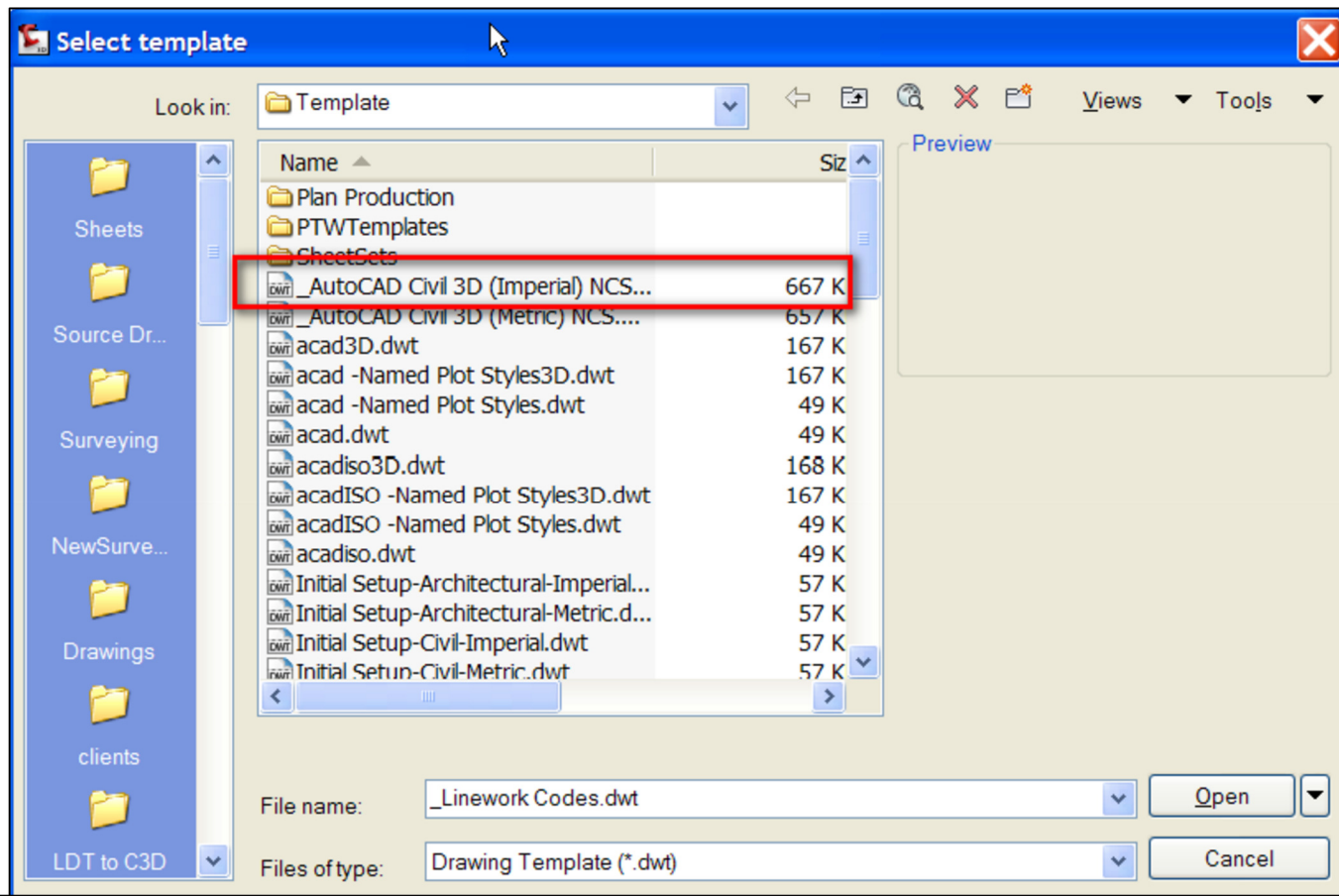
Problem 1: Point Labels have leader attached to the wrong side of the label when dragged to the left of the point.

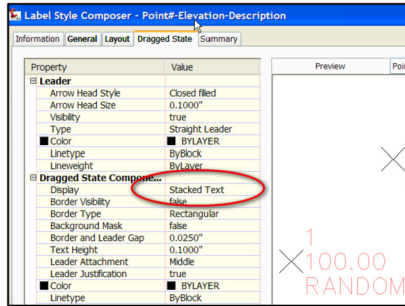


Problem 2: Point Label Components in dragged state set to Stacked are in the wrong order. The desired order is Point Number, Elevation, Description

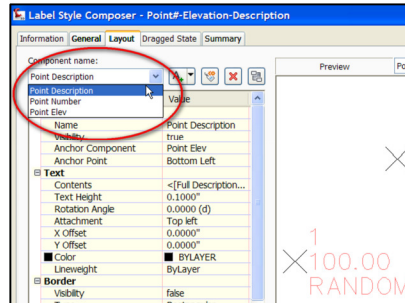


The problem originates in the Point Label Style found in the drawing template `_AutoCAD Civil 3D (Imperial) NCS.dwt`.

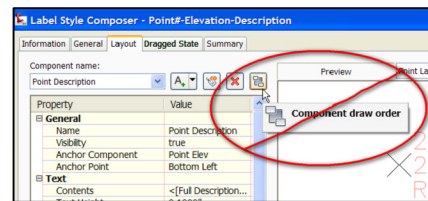




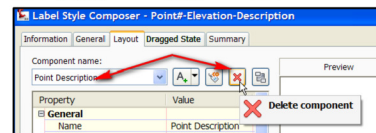
To solve **Problem 1** change the drag state from "as composed" to "stacked"



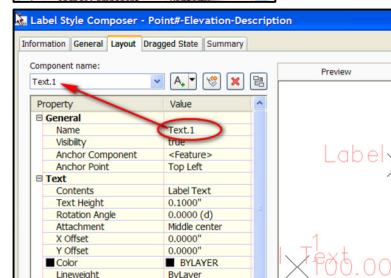
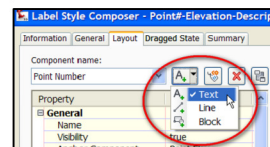
Problem 2 is a result of the label style not being setup correctly for use when the dragged state is set to stacked.



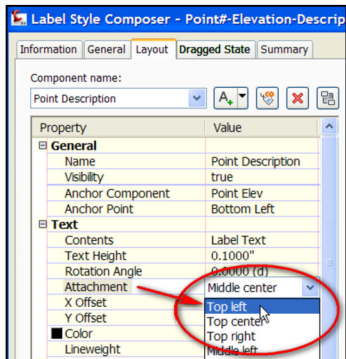
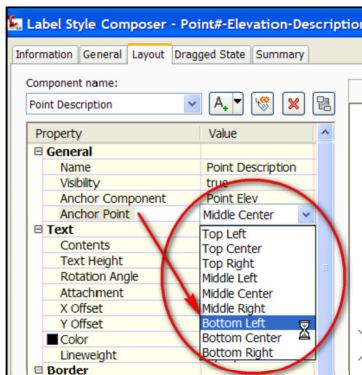
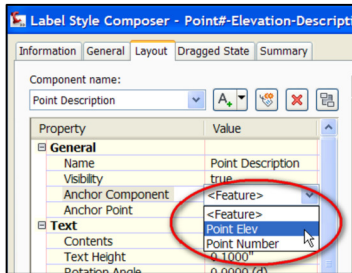
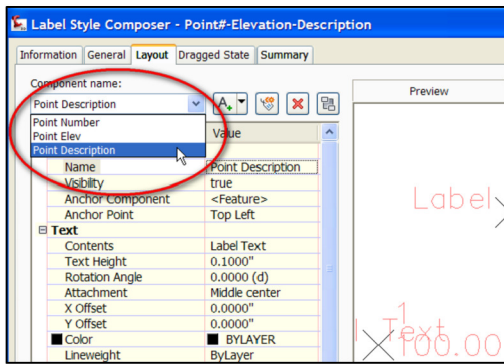
The drop down list under Components shows the missorted order of components.



The **Component draw order** button does not control sort order. There is no sorting function. The order of the components is the order in which they are created.



To solve **Problem 2** delete and recreate the **Point Description** component. The screen captures to the left detail the process.



Getting the Point Description component lined up with the Elevation component is detailed in the screen captures to the left

The help file (Right) has good diagrams showing the anchor and attachment positions for the <Feature> and the Text Component.

AutoCAD Civil 3D
 AutoCAD Civil 3D 2010 User's Guide > Labels and Tags > Managing Layout Properties for Label Styles >
Anchor Points and Attachment Points
 Concept Procedure Quick Reference

Label component position is defined by specifying an anchor component, an anchor point, and an attachment point. Rotation angles and X and Y offsets are applied in relation to the anchor component and anchor point.

- Anchor Component.** The *anchor component* is the item that the *label component* is positioned relative to. It can be the object that is labeled, or it can be another label component.
- Anchor Point.** The *anchor point* is the location on the anchor that is attached to the label component's *attachment point*. It can be the label location (when the anchor component is set to Feature) or it can be one of several locations on the label component (when the anchor component is set to a specific label component).
- Attachment Point.** The *attachment point* is the location on the label component that is attached to the anchor point.

The following illustration shows how these points work together to position the label component (the rotated text in the illustration):

Anchor and attachment points for text component

The anchor is on a line (the anchor is set to Feature and the anchor point is Label Location). The attachment point on the text is set to Bottom Left. Note how the X and Y offsets, angle, and border gap all affect how the label is positioned relative to the attachment and anchor points

The following illustrations show the different points on label components that can be used either as anchor points or attachment points.

Anchor and attachment points on text component

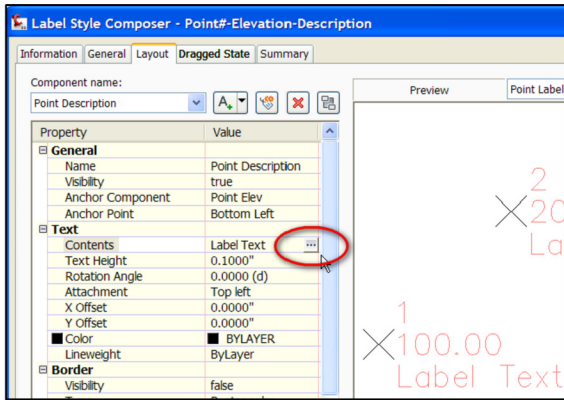
Anchor and attachment points on a block component

Note The location of the insertion point is defined in the block itself. The anchor and attachment points are the same on blocks and ticks.

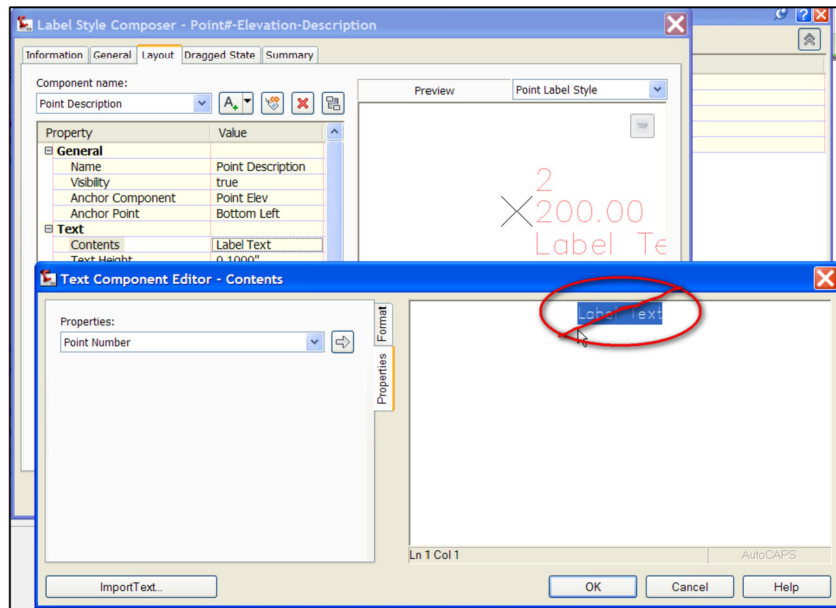
Anchor and attachment points on a direction arrow component

Note The anchor and attachment points are the same on direction arrows and lines.

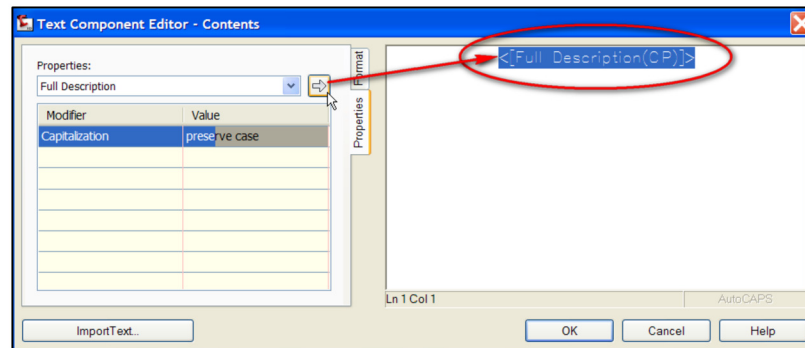
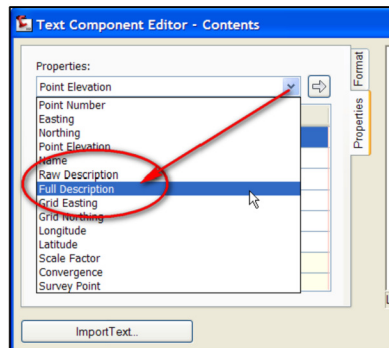
[Please send us your comment about this page](#)

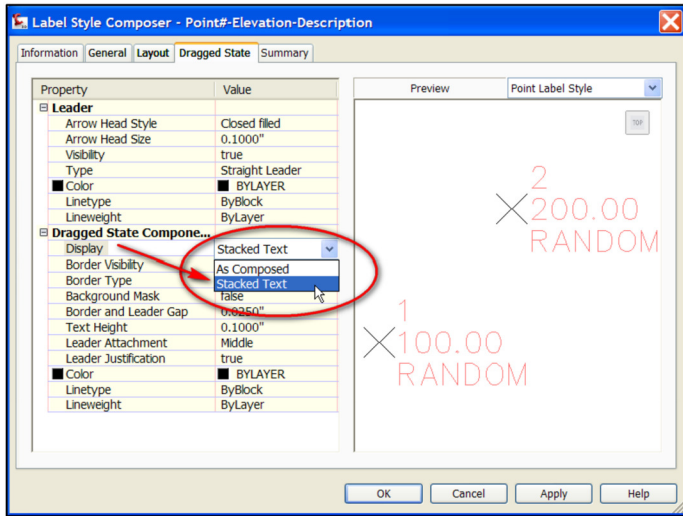


The final step in recreating the Point Description is setting the Text Contents to the Full Description Property.

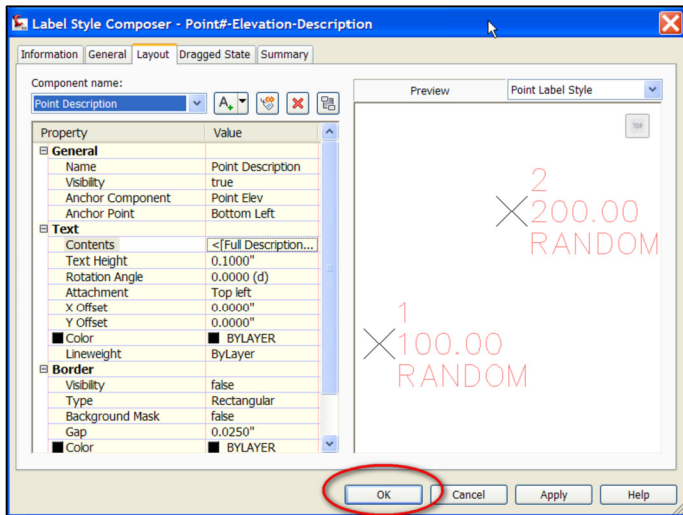
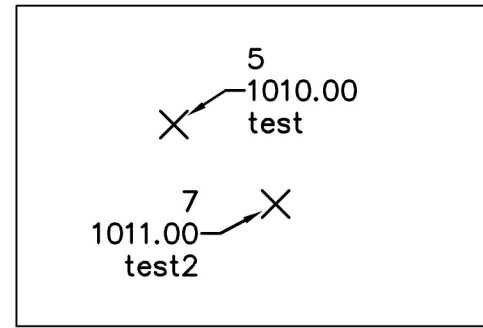


Follow the screen captures to the left to complete the required change.





Finish the required changes to the Point Label Style. You should now be able to use this style in it's dragged state. You should now have the leader attached to the correct side of the text and the components in the correct order.



Point Label Style - Point#, Elevation, Description in a Dragged State with Stacked Text in the correct order.

This tip was provided by:

